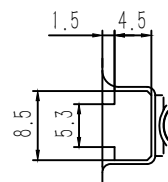
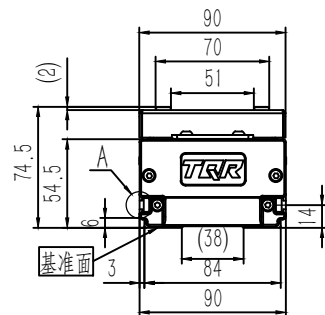
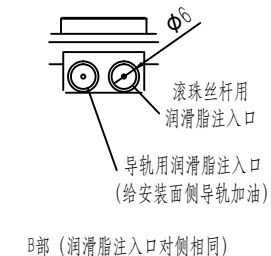
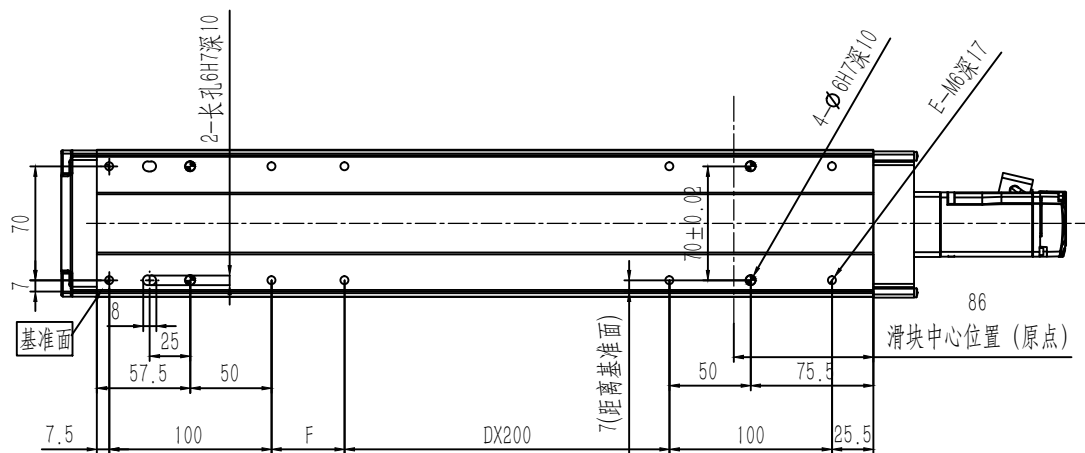
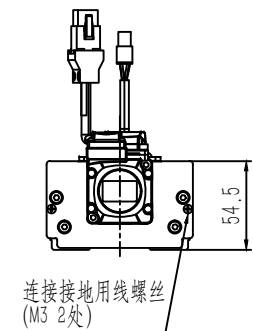
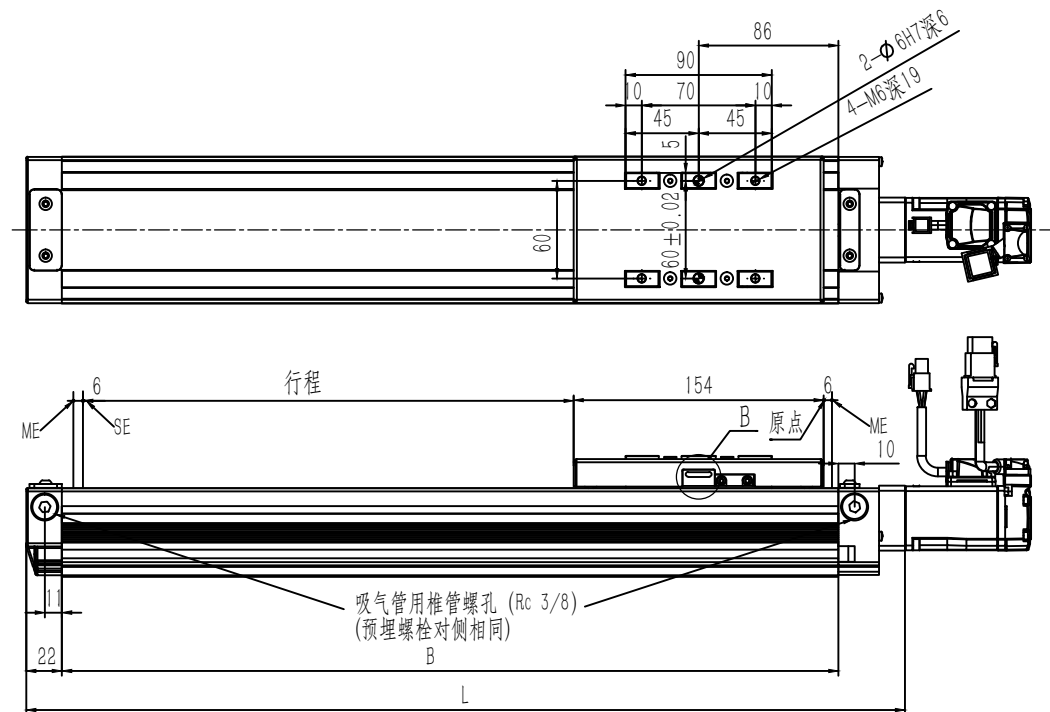


B90C-100

ME: 机械末端
SE: 行程末端



A部详图



■各行程尺寸・质量												※带刹车的质量增加0.3kg			
行程S	100	150	200	250	300	350	400	450	500	550	600	650	700	750	800
L	341	391	441	491	541	591	641	691	741	791	841	891	941	991	1041
B	278	328	378	428	478	528	578	628	678	728	778	828	878	928	978
D	0	0	0	0	1	1	1	1	2	2	2	2	3	3	3
E	8	8	8	8	10	10	10	10	12	12	12	12	14	14	14
F	45	95	145	195	45	95	145	195	45	95	145	195	45	95	145
质量 (kg)	4.3	4.6	5	5.3	5.6	6	6.4	6.7	7.1	7.4	7.7	8	8.4	8.7	9.1