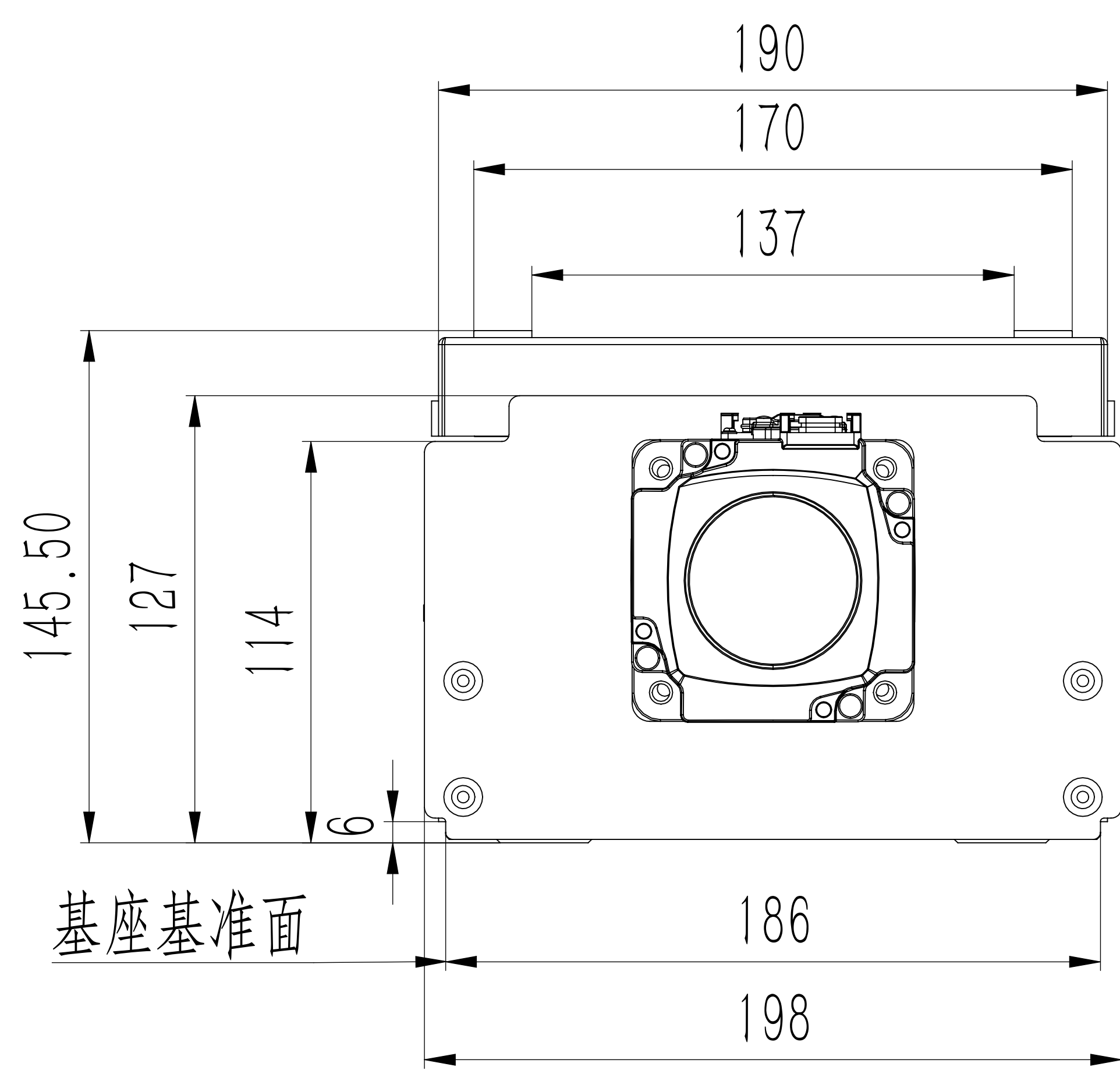
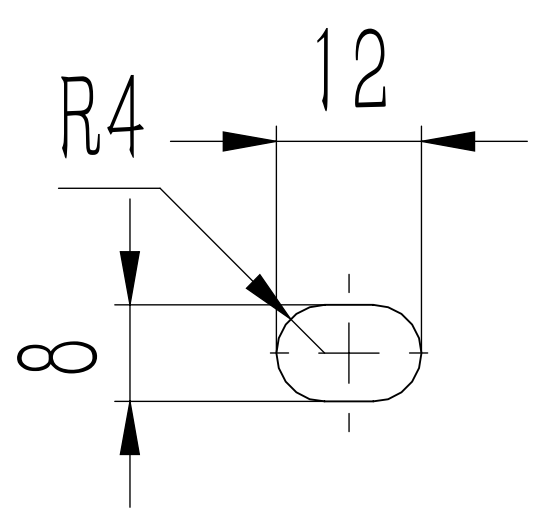


底座安装孔、T形槽部详图

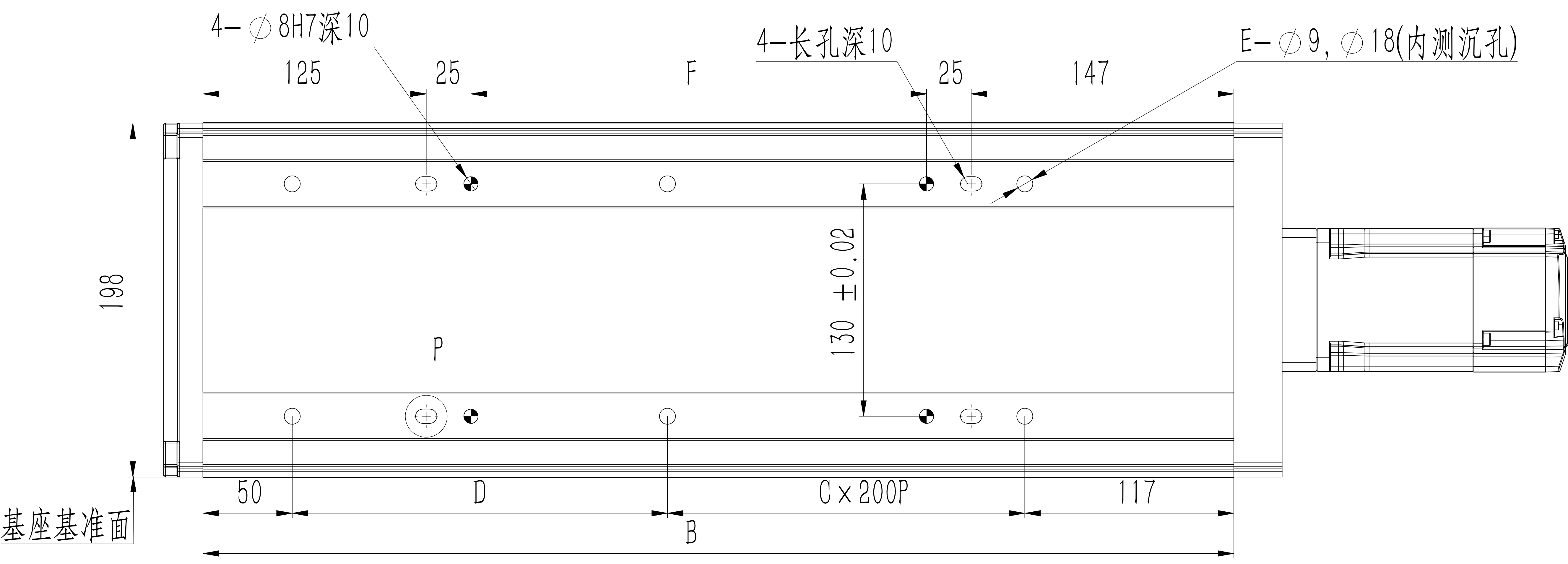
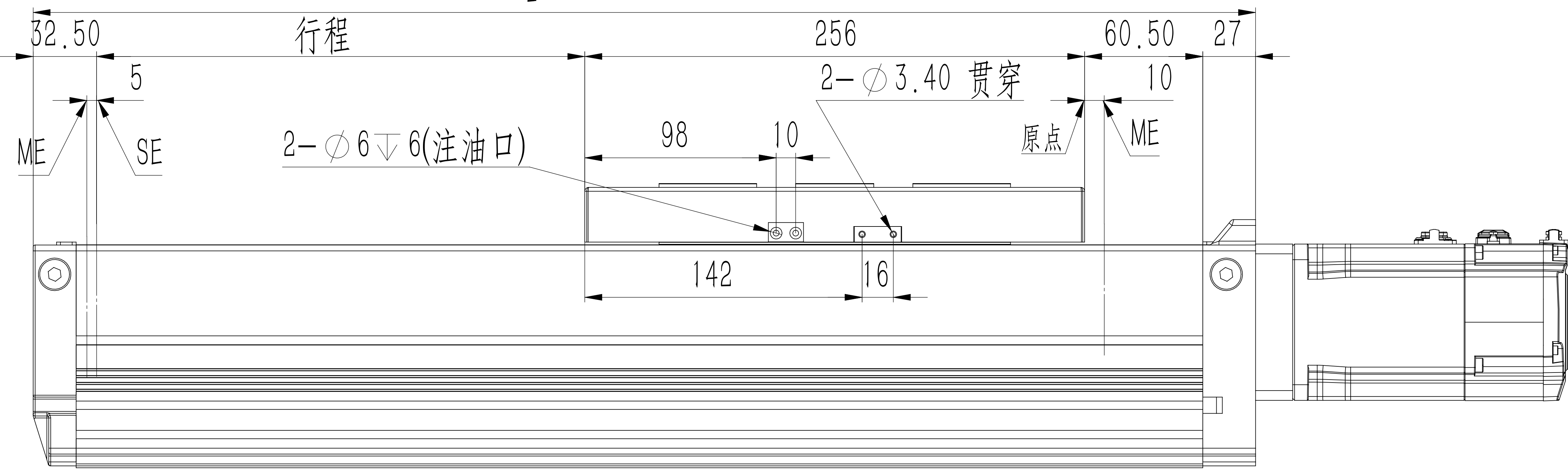


底座基准面



P部详图

ME: 机械终端  
SE: 行程终端



■各行程尺寸·质量

行程S		100	150	200	250	300	350	400	450	500	550	600	650	700	750	800	850	900	950	1000	1050	1100	1150	1200	1250
L		476	526	576	626	676	726	776	826	876	926	976	1026	1076	1126	1176	1226	1276	1326	1376	1426	1476	1526	1576	1626
B		427	477	527	577	627	677	727	777	827	877	927	977	1027	1077	1127	1177	1227	1277	1327	1377	1427	1477	1527	1577
C		1	1	1	1	2	2	2	2	5	3	3	3	4	4	4	4	5	5	5	5	6	6	6	6
D		60	110	160	210	60	110	160	210	60	110	160	210	60	110	160	210	60	110	160	210	60	110	160	210
E		8	8	8	8	10	10	10	10	12	12	12	12	14	14	14	14	16	16	16	16	18	18	18	18
F		105	155	205	255	305	355	405	455	505	555	605	655	705	755	805	855	905	955	1005	1055	1105	1155	1205	1255
质量 (kg)	无刹车	28.5	29.3	30.1	30.9	31.7	32.5	33.3	34.1	34.9	35.7	36.5	37.3	38.1	38.9	39.7	40.5	41.3	42.1	42.9	43.7	44.5	45.3	46.1	46.9
	带刹车	29.3	30.1	30.9	31.7	32.5	33.3	34.1	34.9	35.7	36.5	37.3	38.1	38.9	39.7	40.5	41.3	42.1	42.9	43.7	44.5	45.3	46.1	46.9	47.7